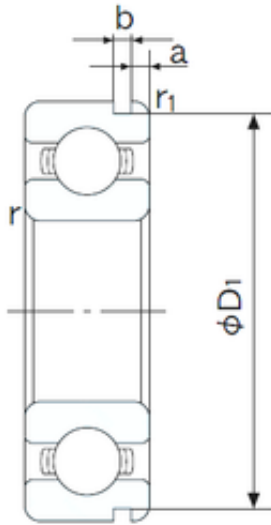




WUXI IKC MACHINERY BEARING CO., LTD.



120 mm x 150 mm x 16 mm NACHI 6824N deep groove ball bearings

Bearing No. 6824N

6824N Bearing 2D drawings and 3D CAD models

Size	120x150x16 mm
Bore Diameter	120 mm
Outer Diameter	150 mm
Width	16 mm
d	120 mm
D	150 mm
B	16 mm
C	16 mm
a	2.5 mm
b	1.9 mm
r min.	1 mm
r1 min.	0.5 mm
D1	147.6 mm
Weight	0.567 Kg
Basic dynamic load rating (C)	28,3 kN
Basic static load rating (C0)	31,5 kN
(Grease) Lubrication Speed	4000 r/min
Bore Type	Cylindrical Bore
Enclosure	Open
Configuration	Single Row
Bore Size	120 mm
Outside Diameter	150 mm
Width	16 mm
Fillet Radius/Chamfer	1 mm
r1	0.5 mm



WUXI IKC MACHINERY BEARING CO., LTD.

Groove Width	1.9 mm
Groove Diameter	147.6 mm
a (max)	2.5 mm
Dynamic Load Rating	28,300 N
Static Load Rating	31,500 N
Limiting Speed - Grease	4,000 rpm
Limiting Speed - Oil	4,800 rpm
Factor fo	16.0
Radial Clearance	0.015 to 0.041 mm
da (min)	125 mm
Da (max)	145 mm
Dx (min)	157 mm
ra (max)	1 mm
Cy (max)	3.9 mm